

Travel directions to the Conference Center



Address of Conference Center:

Christliches Erholungsheim Schönblick
Willy-Schenk-Straße 9
73527 Schwäbisch Gmünd

Phone: ++49 7171 9707 0

Fax: ++49 7171 9707 172

email: kontakt@schoenblick-info.de

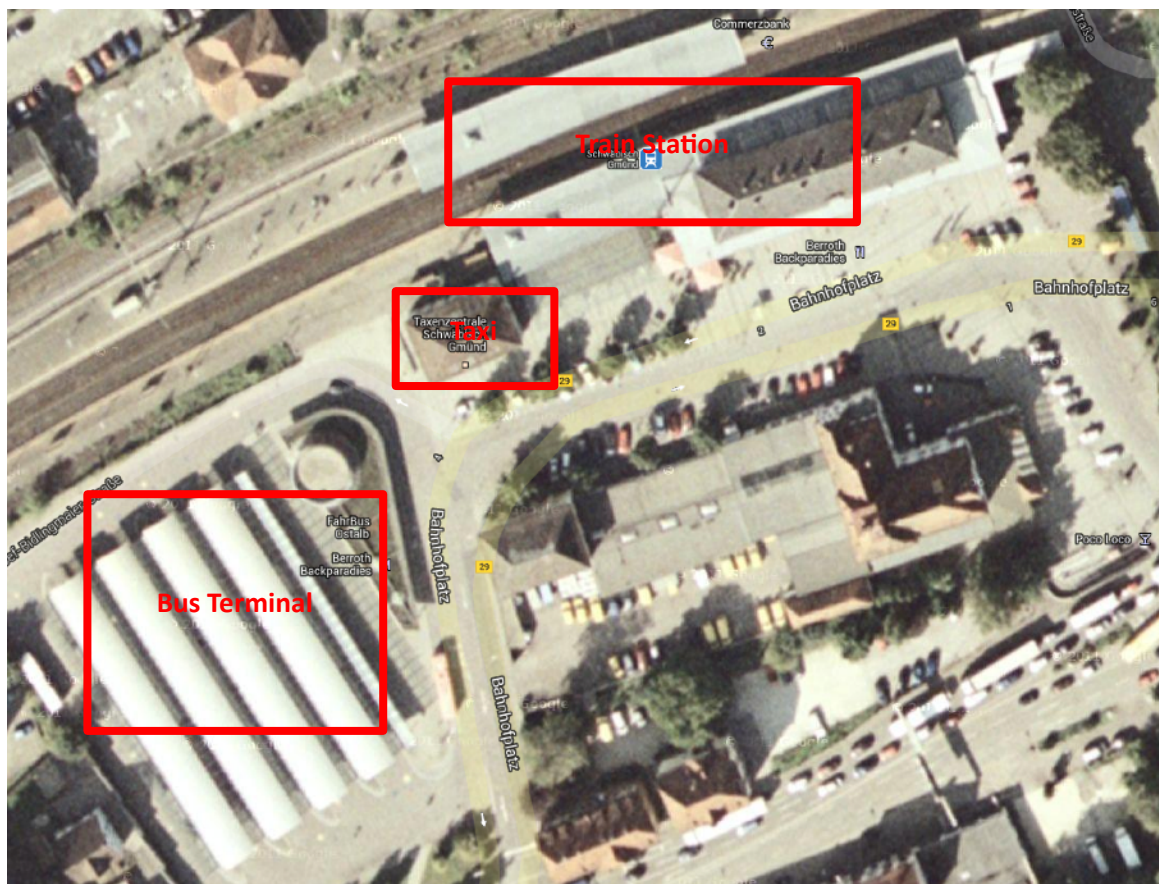
www.schoenblick-info.de

For those of you not coming by car, you will probably take a combination of train and bus or taxi to arrive. If you take a taxi directly from Stuttgart airport to Schoenblick, it will cost over 100 Euros.

Use **www.bahn.com** to find your best flight-train connection and you can buy and print the train ticket before you leave home. If you are concerned about your flight not arriving on time you can also buy tickets at the train stations when you arrive using an automated machine. The trains usually have space so you don't have to buy in advance.

1. Take the train to Schwäbisch Gmünd Hauptbahnhof (Main Station).
2. You can catch a taxi from the Schwäbisch Gmünd Hauptbahnhof (Main Station) to Schoenblick for about 12 Euros or you can take the bus (see directions below.)

3. Find the bus terminal and take bus line 6 to Rehnenhof/ Wetzgau. The bus fare will be 2.50€. The bus leaves about every 30 minutes from 8 AM until 11 PM. (Print off the third page of these directions to give to the driver of the bus so he knows where you want to get off.)
4. Take the bus about 20 or 30 minutes and get off at the Karlsbaderstrasse stop. You will be right in front of the conference center Schönblick. (The bus has more than one route around town, but all routes come to the right stop in about the same amount of time.)
5. Take the bus about 20 or 30 minutes and get off at the Karlsbaderstrasse stop. You will be right in front of the conference center Schönblick. (The bus has more than one route around town, but all routes come to the right stop in about the same amount of time.)



I want to go to Scheonblick. Please let me know when to get off the bus. Thanks!

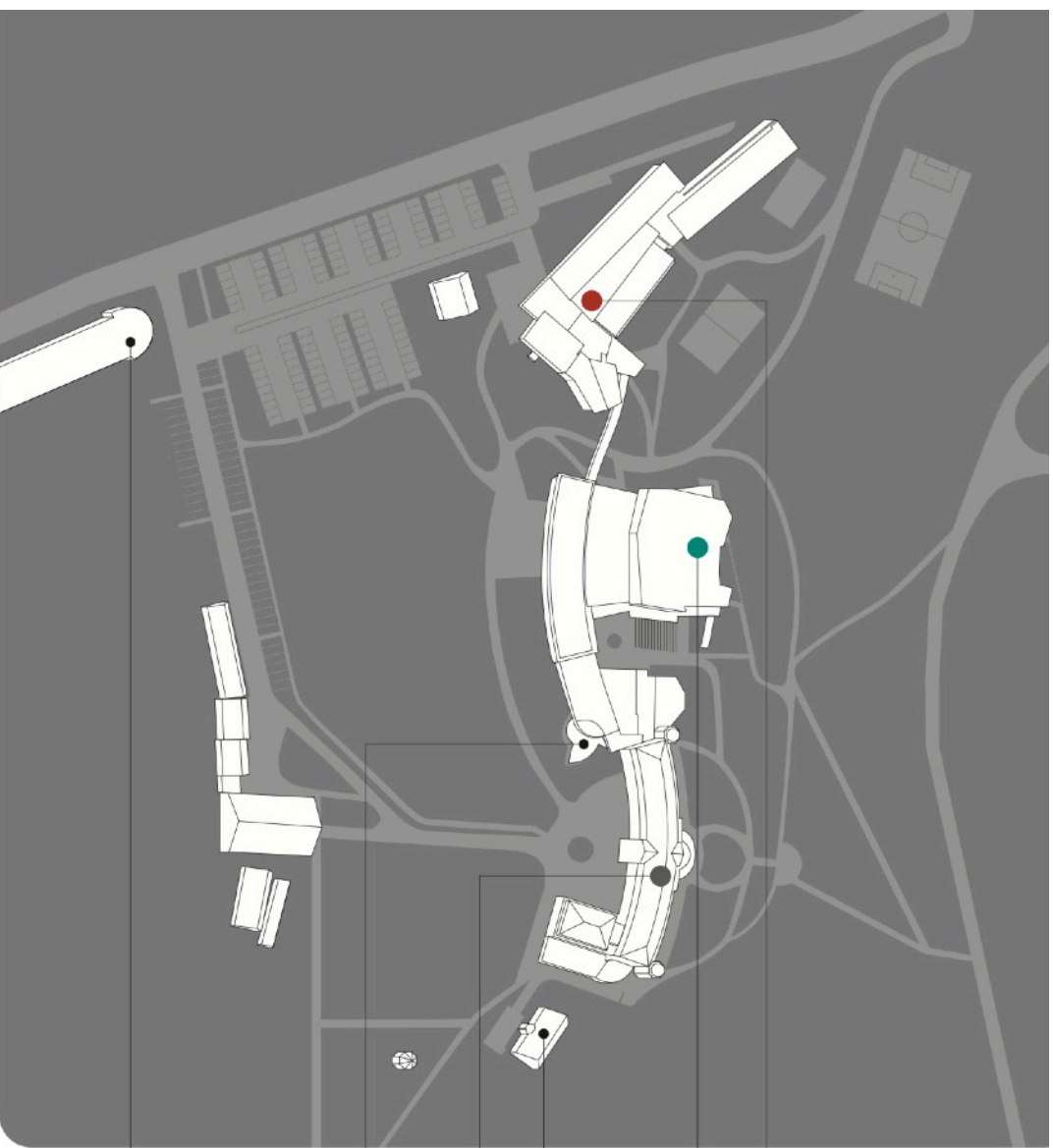
In German:

Ich möchte zum Schönblick.

**Bitte sagen Sie mir,
wenn ich aussteigen muss.**

Vielen Dank!





● Seminarhaus
Seminar 1 – 11

● Forum
Forum 1-7
Evangelische Gemeinde
Christliche Gemeinde-Musikschule

● Haus Friede

● Gästehaus
Speisensäle
Bewegungshof

● Kapelle

● Schönblick Café
Café Raum 2 + 3
Seniorenwohnanlage

● Bus Stop: Karlsbader Str., Renenhof